



# Composite Discovery

## ADVANTAGES

Composite Discovery provides the following key benefits:

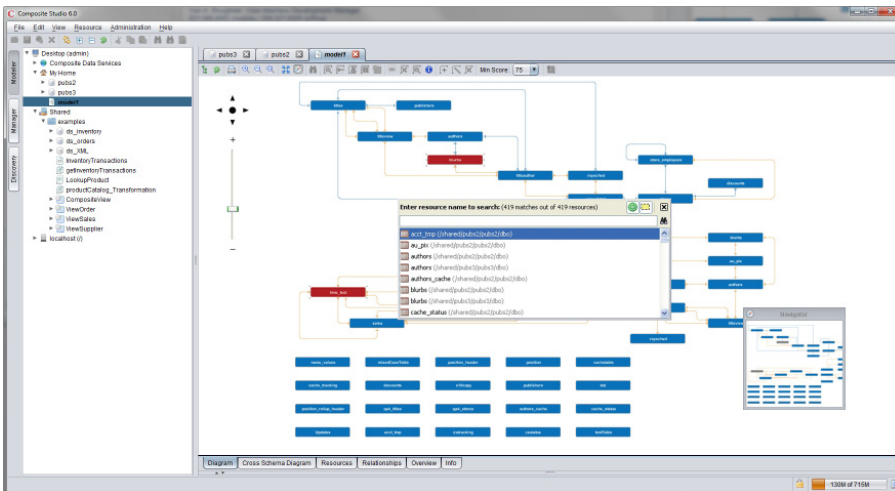
- **Faster Time to Solution** – Accelerates the data relationship finding and modeling process. Users can eliminate time and effort typically employed in uncovering the entities and relationships necessary to build data models. Accelerating these initial steps of the project reduces overall project time.
- **Accuracy** – Composite Discovery helps align data's business and technical contexts, facilitating greater collaboration between business and IT professionals. Discovery's ability to display meta-data in an easy-to-read format allows users to easily validate requirements with greater confidence. More accurate validation at the front-end of the project reduces corrective actions in downstream steps.
- **Simplification** – Discovery's ease of use and automation reduces the need for data modeling expertise. Project team members can now redirect these efforts toward business application development.

Many large companies and government agencies are burdened by a complex information environment with numerous scattered data sources with few documented relationships. Understanding your data assets is a critical prerequisite to implementing successful IT projects. However, in complex environments, this task is a cumbersome manual process, often times performed inconsistently, leading to delays and perhaps even failures.

## PRODUCT

Composite Discovery is a product option of the Composite Information Server. Discovery enables IT professionals to go beyond mere profiling to examine data, locate key entities and reveal hidden data relationships within their enterprise data assets. This knowledge helps you quickly build rich data models or views for data virtualization projects and other IT initiatives. The views allow you to access and work with live data, making it easier to validate business requirements with end users. Once the models meet business requirements, you can use Composite Studio to continue on with the software development lifecycle. The Composite Information Server applies the query optimization algorithms and techniques necessary for high-performance run-time operations.

Discovery lets IT and business professionals simplify and accelerate the requirements gathering and data validation process; not only speeding time to solution, but also ensuring that end solution meets the business objectives.



Composite Discovery

## FEATURES

- **Uncover Data Sources** – Locate relevant entities across your complex data environment.
- **Discover Relationships** – Reveal data relationships across disparate entities using formal keys and fuzzy matching. This provides greater insight into a complex data environment to accelerate data modeling and improves project planning and design.
- **Data Virtualization Modeling** – Shape and refine data models in a rich graphical environment, enabling simple and flexible data modeling. Modeling capabilities include:
  - Pragmatic bottom up data modeling – build models from the ground up with metadata tied to actual data sources.
  - Easy-to-use design functions – capabilities includes transformation, filtering, parameter passing.
  - Adaptable rules engine – provide hints to the relationship discovery process to improve matching accuracy.
  - Automatically create views – create models with join criteria based on discovered relationships.
- **Information Server Integration** – Discovery is part of the Composite Information Server code base, so no additional integration is required. Any models created in Discovery are also usable within Studio.
- **Export to MS Excel** – Save relationship information to a comma-separated values file that can be read in Excel.

## SPECIFICATIONS

### COMPOSITE INFORMATION SERVER

- Version 5.2 or higher

### PLATFORMS

- Client for Composite Studio
  - Microsoft Windows 2000, 2003, XP, Vista, 2008, Win 7
- Server
  - IBM AIX 5.3x
  - HP-UX B 11.11x
  - Red Hat Enterprise Linux AS 3 32bit, 4x, 5x, 6x
  - Sun Solaris 9x
  - SUSE Linux Enterprise Server 9.3 32bit, 10x, 11x
  - Microsoft Windows 2000, 2003, 2008, Vista Business Edition, XP, Win 7
- JVMs
  - 32-bit, 64-bit